

Technical Newsletter 15

Den Helder, 6 October 2016

- [MODBUS data acquisitie](#)
- [IP67 sun displays](#)
- [Smart linerecorder](#)
- [Smart panel](#)



News

News from CANtronik

Having worked hard to cost reduce our entry level monochrome display, the CANtronik team has launched the new CANvu 230 display. CANvu™ 500 is our new flat 5" colour display joining the CANvu family of CANBus displays due to go into full production Q1 of 2017. The latest release of CANvu Advanced Engine Monitor (AEM) software now also supports the 7" touch-screen. Look out for latest news of the launches on their website <https://www.cantronik.com>



Did You know:

WiTD DokuWiki Support
Our support pages are converted to a Wiki document web application. On this DocuWiki we publish for each customer the latest project documents and software for download and you will find the latest versions of manuals, software and FAQ of our products. But being a wiki, it is also possible to leave uploads (max. 8Mb / file) and comments on your private Wiki. If you do not have a login yet please send an email to witd@waalamo.com.



Printing bridges

MX3D is an R&D startup. MX3D invented an affordable multiple axis 3D printing tool; in 2014, we equipped an industrial robot with an advanced welding machine and developed software to control it. It allows us to 3D print strong, complex structures out of sustainable material (metals, resin) in virtually any size or shape. <http://mx3d.com>

FREE electrical CAD software.

DesignSpark Electrical is a new, free electrical CAD software. The latest addition to the DesignSpark set of tools, this is a bespoke electrical CAD solution for engineering professionals looking to save time and create error-free designs. For download goto <http://www.designspark.com>

The XC6 DMSR Ultra Rugged Sunlight Readable Tablet PC

As the most rugged Windows® tablet on the market, the XC6 DMSR is ideal for industrial and outdoor environments. Powered by a 4th Gen Intel® Core™ i5 processor, the high-performance rugged tablet features a direct sunlight readable display, as well as an innovative resistive multi-touch interface to make running your toughest applications easier than ever- no matter how extreme the environment.



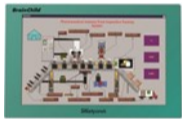
Of course, we can install this service also on your own host or local server and configure it to your needs, for more information contact us.

New from BrainChild

BrainChild has released new RS-485 modbus RTU IO modules with a supply voltage of 10-60Vdc and 32 digital or 16 analogue IO.



A new WINCE wide 10" HMI with smaller edge and CODESYS V3.5 HMI+PLC with Linux RTOS are soon to be released.



32" Flexible display for digital signage

A 32" flexible and extremely lightweight display. These two features make the display an ideal solution as a drop-in replacement for digital signage applications in transportation and other public information systems. This is the latest addition to the E Ink Mobius™ product line of 150 grams flexible and low power displays make it an ideal drop-in replacement for the existing paper or plastic based systems in present use.



Waterproof Panel PC systems from Dutch soil

Simplex Touch waterproof systems are equipped with a durable hard glass projective capacitive touch interface which is itself well operate with a glove. IP65 certification of the display describes the dust and water resistance. Simplex Touch waterproof systems are available with a large 19" and 22" screen. Freely configure with all available new Intel processors. This flexible configuration options make the Simplex Touch Panel PC systems the fastest and most reliable systems on the market. The enclosure is made of 2mm thick stainless steel, smooth finish with high quality waterproof industrial connectors. Simplex Touch Panel PC systems are assembled in the Netherlands which itself stands for quality, service and short delivery time. For more information <https://panelpcs.nl>



Also great for Brainchild's Studio Data Acquisition (DAQ) software (or other SCADA suite) for data logging and acquisition. DAQ acquires and logs data from Modbus RTU / Modbus TCP Slave devices like IO Modules, recorders, controllers, etc., and shows real time data on your PC of trends, bar graphs, digital values, etc.

ATEX 114
Since April 20, 2016, we are dealing with the new ATEX 114 Directive (2014/34 / EU) for explosion-proof equipment.

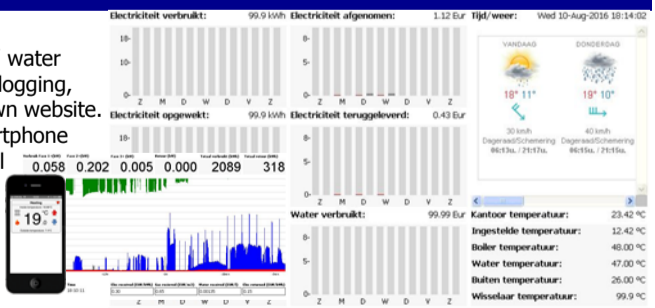
ESA satellite M2M communication
European Space Agency is offering funding / co-funding for studies towards new M2M / IoT systems. Like test-bed for LEO M2M scenarios and LTE NB / NB -IoT backhauling via satellite are examples of funding opportunities.

Again new Blue Guide for CE marking
EU Official Journal C272 July 26, 2016. In 2015 was published a new version, which replace the version of 2000. In the latest version of the Blue Guide are some small things changed compared with the version of 2015, for details see <http://www.iab-ingenieurs.nl/nieuwe-blue-guide-ce-markering>

Solutions

Customized HMI Power Monitor

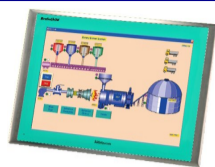
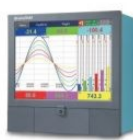
An energy monitor for all your energy / water consumption and generated, including logging, webserver and XML posting for your own website. And of course, accessible via your smartphone and options such as SMS and / or Email warnings and extendable with various IO modules. For more Solutions see <http://www.waalamo.com>



Technical Newsletter 15

Den Helder, 6 October 2016

[MODBUS data acquisitie](#) • [IP67 sun displays](#) • [Smart linerecorder](#) • [Smart panel](#)



News

News from CANtronik

Having worked hard to cost reduce our entry level monochrome display, the CANtronik team has launched the new CANvu 230 display. CANvu™ 500 is our new flat 5" colour display joining the CANvu family of CANBus displays due to go into full production Q1 of 2017. The latest release of CANvu Advanced Engine Monitor (AEM) software now also supports the 7" touch-screen. Look out for latest news of the launches on their website <https://www.cantronik.com>



Did You know:

WiTD DokuWiki Support
Our support pages are converted to a Wiki document web application. On this DocuWiki we publish for each customer the latest project documents and software for download and you will find the latest versions of manuals, software and FAQ of our products. But being a wiki, it is also possible to leave uploads (max. 8Mb / file) and comments on your private Wiki. If you do not have a login yet please send an email to witd@waalamo.com.

Printing bridges

MX3D is an R&D startup. MX3D invented an affordable multiple axis 3D printing tool; in 2014, we equipped an industrial robot with an advanced welding machine and developed software to control it. It allows us to 3D print strong, complex structures out of sustainable material (metals, resin) in virtually any size or shape. <http://mx3d.com>



FREE electrical CAD software.

DesignSpark Electrical is a new, free electrical CAD software. The latest addition to the DesignSpark set of tools, this is a bespoke electrical CAD solution for engineering professionals looking to save time and create error-free designs. For download goto <http://www.designspark.com>

The XC6 DMSR Ultra Rugged Sunlight Readable Tablet PC

As the most rugged Windows® tablet on the market, the XC6 DMSR is ideal for industrial and outdoor environments. Powered by a 4th Gen Intel® Core™ i5 processor, the high-performance rugged tablet features a direct sunlight readable display, as well as an innovative resistive multi-touch interface to make running your toughest applications easier than ever- no matter how extreme the environment.



Of course, we can install this service also on your own host or local server and configure it to your needs, for more information contact us.

New from BrainChild

BrainChild has released new RS-485 modbus RTU IO modules with a supply voltage of 10-60Vdc and 32 digital or 16 analogue IO.



A new WINCE wide 10" HMI with smaller edge and CODESYS V3.5 HMI+PLC with Linux RTOS are soon to be released.

32" Flexible display for digital signage

A 32" flexible and extremely lightweight display. These two features make the display an ideal solution as a drop-in replacement for digital signage applications in transportation and other public information systems. This is the latest addition to the E Ink Mobius™ product line of 150 grams flexible and low power displays make it an ideal drop-in replacement for the existing paper or plastic based systems in present use.



Waterproof Panel PC systems from Dutch soil

Simplex Touch waterproof systems are equipped with a durable hard glass projective capacitive touch interface which is itself well operate with a glove. IP65 certification of the display describes the dust and water resistance. Simplex Touch waterproof systems are available with a large 19" and 22" screen. Freely configure with all available new Intel processors. This flexible configuration options make the Simplex Touch Panel PC systems the fastest and most reliable systems on the market. The enclosure is made of 2mm thick stainless steel, smooth finish with high quality waterproof industrial connectors. Simplex Touch Panel PC systems are assembled in the Netherlands which itself stands for quality, service and short delivery time. For more information <https://panelpcs.nl>



Also great for Brainchild's Studio Data Acquisition (DAQ) software (or other SCADA suite) for data logging and acquisition. DAQ acquires and logs data from Modbus RTU / Modbus TCP Slave devices like IO Modules, recorders, controllers, etc., and shows real time data on your PC of trends, bar graphs, digital values, etc.

ATEX 114
Since April 20, 2016, we are dealing with the new ATEX 114 Directive (2014/34 / EU) for explosion-proof equipment.

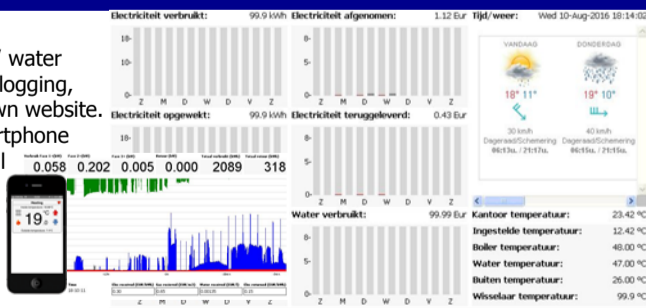
ESA satellite M2M communication
European Space Agency is offering funding / co-funding for studies towards new M2M / IoT systems. Like test-bed for LEO M2M scenarios and LTE NB / NB -IoT backhauling via satellite are examples of funding opportunities.

Again new Blue Guide for CE marking
EU Official Journal C272 July 26, 2016. In 2015 was published a new version, which replace the version of 2000. In the latest version of the Blue Guide are some small things changed compared with the version of 2015, for details see <http://www.iab-ingenieurs.nl/nieuwe-blue-guide-ce-markering>

Solutions

Customized HMI Power Monitor

An energy monitor for all your energy / water consumption and generated, including logging, webserver and XML posting for your own website. And of course, accessible via your smartphone and options such as SMS and / or Email warnings and extendable with various IO modules. For more Solutions see <http://www.waalamo.com>



Technical Newsletter 15

Den Helder, 6 October 2016

- [MODBUS data acquisitie](#)
- [IP67 sun displays](#)
- [Smart linerecorder](#)
- [Smart panel](#)



News

News from CANtronik

Having worked hard to cost reduce our entry level monochrome display, the CANtronik team has launched the new CANvu 230 display. CANvu™ 500 is our new flat 5" colour display joining the CANvu family of CANBus displays due to go into full production Q1 of 2017. The latest release of CANvu Advanced Engine Monitor (AEM) software now also supports the 7" touch-screen. Look out for latest news of the launches on their website <https://www.cantronik.com>



Did You know:

WiTD DokuWiki Support
Our support pages are converted to a Wiki document web application. On this DocuWiki we publish for each customer the latest project documents and software for download and you will find the latest versions of manuals, software and FAQ of our products. But being a wiki, it is also possible to leave uploads (max. 8Mb / file) and comments on your private Wiki. If you do not have a login yet please send an email to witd@waalamo.com.

Printing bridges

MX3D is an R&D startup. MX3D invented an affordable multiple axis 3D printing tool; in 2014, we equipped an industrial robot with an advanced welding machine and developed software to control it. It allows us to 3D print strong, complex structures out of sustainable material (metals, resin) in virtually any size or shape. <http://mx3d.com>



FREE electrical CAD software.

DesignSpark Electrical is a new, free electrical CAD software. The latest addition to the DesignSpark set of tools, this is a bespoke electrical CAD solution for engineering professionals looking to save time and create error-free designs. For download goto <http://www.designspark.com>

The XC6 DMSR Ultra Rugged Sunlight Readable Tablet PC

As the most rugged Windows® tablet on the market, the XC6 DMSR is ideal for industrial and outdoor environments. Powered by a 4th Gen Intel® Core™ i5 processor, the high-performance rugged tablet features a direct sunlight readable display, as well as an innovative resistive multi-touch interface to make running your toughest applications easier than ever- no matter how extreme the environment.



Of course, we can install this service also on your own host or local server and configure it to your needs, for more information contact us.

New from BrainChild

BrainChild has released new RS-485 modbus RTU IO modules with a supply voltage of 10-60Vdc and 32 digital or 16 analogue IO.



A new WINCE wide 10" HMI with smaller edge and CODESYS V3.5 HMI+PLC with Linux RTOS are soon to be released.

32" Flexible display for digital signage

A 32" flexible and extremely lightweight display. These two features make the display an ideal solution as a drop-in replacement for digital signage applications in transportation and other public information systems. This is the latest addition to the E Ink Mobius™ product line of 150 grams flexible and low power displays make it an ideal drop-in replacement for the existing paper or plastic based systems in present use.



Waterproof Panel PC systems from Dutch soil

Simplex Touch waterproof systems are equipped with a durable hard glass projective capacitive touch interface which is itself well operate with a glove. IP65 certification of the display describes the dust and water resistance. Simplex Touch waterproof systems are available with a large 19" and 22" screen. Freely configure with all available new Intel processors. This flexible configuration options make the Simplex Touch Panel PC systems the fastest and most reliable systems on the market. The enclosure is made of 2mm thick stainless steel, smooth finish with high quality waterproof industrial connectors. Simplex Touch Panel PC systems are assembled in the Netherlands which itself stands for quality, service and short delivery time. For more information <https://panelpcs.nl>



Also great for Brainchild's Studio Data Acquisition (DAQ) software (or other SCADA suite) for data logging and acquisition. DAQ acquires and logs data from Modbus RTU / Modbus TCP Slave devices like IO Modules, recorders, controllers, etc., and shows real time data on your PC of trends, bar graphs, digital values, etc.

ATEX 114
Since April 20, 2016, we are dealing with the new ATEX 114 Directive (2014/34 / EU) for explosion-proof equipment.

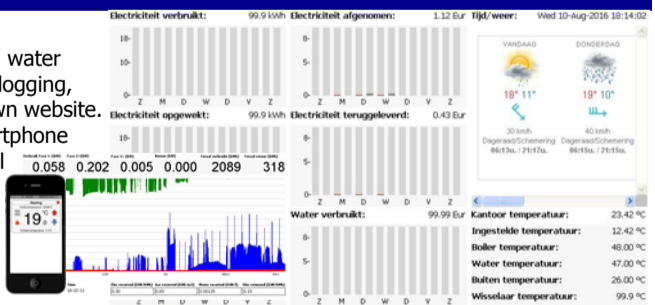
ESA satellite M2M communication
European Space Agency is offering funding / co-funding for studies towards new M2M / IoT systems. Like test-bed for LEO M2M scenarios and LTE NB / NB -IoT backhauling via satellite are examples of funding opportunities.

Again new Blue Guide for CE marking
EU Official Journal C272 July 26, 2016. In 2015 was published a new version, which replace the version of 2000. In the latest version of the Blue Guide are some small things changed compared with the version of 2015, for details see <http://www.iab-ingenieurs.nl/nieuwe-blue-guide-ce-markering>

Solutions

Customized HMI Power Monitor

An energy monitor for all your energy / water consumption and generated, including logging, webserver and XML posting for your own website. And of course, accessible via your smartphone and options such as SMS and / or Email warnings and extendable with various IO modules. For more Solutions see <http://www.waalamo.com>



Technical Newsletter 15

Den Helder, 6 October 2016

- [MODBUS data acquisitie](#)
- [IP67 sun displays](#)
- [Smart linerecorder](#)
- [Smart panel](#)



News

News from CANtronik

Having worked hard to cost reduce our entry level monochrome display, the CANtronik team has launched the new CANvu 230 display. CANvu™ 500 is our new flat 5" colour display joining the CANvu family of CANBus displays due to go into full production Q1 of 2017. The latest release of CANvu Advanced Engine Monitor (AEM) software now also supports the 7" touch-screen. Look out for latest news of the launches on their website <https://www.cantronik.com>



Did You know:

WiTD DokuWiki Support
Our support pages are converted to a Wiki document web application. On this DocuWiki we publish for each customer the latest project documents and software for download and you will find the latest versions of manuals, software and FAQ of our products. But being a wiki, it is also possible to leave uploads (max. 8Mb / file) and comments on your private Wiki. If you do not have a login yet please send an email to witd@waalamo.com.



Printing bridges

MX3D is an R&D startup. MX3D invented an affordable multiple axis 3D printing tool; in 2014, we equipped an industrial robot with an advanced welding machine and developed software to control it. It allows us to 3D print strong, complex structures out of sustainable material (metals, resin) in virtually any size or shape. <http://mx3d.com>

FREE electrical CAD software.

DesignSpark Electrical is a new, free electrical CAD software. The latest addition to the DesignSpark set of tools, this is a bespoke electrical CAD solution for engineering professionals looking to save time and create error-free designs. For download goto <http://www.designspark.com>

The XC6 DMSR Ultra Rugged Sunlight Readable Tablet PC

As the most rugged Windows® tablet on the market, the XC6 DMSR is ideal for industrial and outdoor environments. Powered by a 4th Gen Intel® Core™ i5 processor, the high-performance rugged tablet features a direct sunlight readable display, as well as an innovative resistive multi-touch interface to make running your toughest applications easier than ever- no matter how extreme the environment.



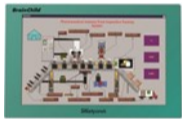
Of course, we can install this service also on your own host or local server and configure it to your needs, for more information contact us.

New from BrainChild

BrainChild has released new RS-485 modbus RTU IO modules with a supply voltage of 10-60Vdc and 32 digital or 16 analogue IO.



A new WINCE wide 10" HMI with smaller edge and CODESYS V3.5 HMI+PLC with Linux RTOS are soon to be released.



32" Flexible display for digital signage

A 32" flexible and extremely lightweight display. These two features make the display an ideal solution as a drop-in replacement for digital signage applications in transportation and other public information systems. This is the latest addition to the E Ink Mobius™ product line of 150 grams flexible and low power displays make it an ideal drop-in replacement for the existing paper or plastic based systems in present use.



Waterproof Panel PC systems from Dutch soil

Simplex Touch waterproof systems are equipped with a durable hard glass projective capacitive touch interface which is itself well operate with a glove. IP65 certification of the display describes the dust and water resistance. Simplex Touch waterproof systems are available with a large 19" and 22" screen. Freely configure with all available new Intel processors. This flexible configuration options make the Simplex Touch Panel PC systems the fastest and most reliable systems on the market. The enclosure is made of 2mm thick stainless steel, smooth finish with high quality waterproof industrial connectors. Simplex Touch Panel PC systems are assembled in the Netherlands which itself stands for quality, service and short delivery time. For more information <https://panelpcs.nl>



Also great for Brainchild's Studio Data Acquisition (DAQ) software (or other SCADA suite) for data logging and acquisition. DAQ acquires and logs data from Modbus RTU / Modbus TCP Slave devices like IO Modules, recorders, controllers, etc., and shows real time data on your PC of trends, bar graphs, digital values, etc.

ATEX 114
Since April 20, 2016, we are dealing with the new ATEX 114 Directive (2014/34 / EU) for explosion-proof equipment.

ESA satellite M2M communication
European Space Agency is offering funding / co-funding for studies towards new M2M / IoT systems. Like test-bed for LEO M2M scenarios and LTE NB / NB -IoT backhauling via satellite are examples of funding opportunities.

Again new Blue Guide for CE marking
EU Official Journal C272 July 26, 2016. In 2015 was published a new version, which replace the version of 2000. In the latest version of the Blue Guide are some small things changed compared with the version of 2015, for details see <http://www.iab-ingenieurs.nl/nieuwe-blue-guide-ce-markering>

Solutions

Customized HMI Power Monitor

An energy monitor for all your energy / water consumption and generated, including logging, webserver and XML posting for your own website. And of course, accessible via your smartphone and options such as SMS and / or Email warnings and extendable with various IO modules. For more Solutions see <http://www.waalamo.com>

