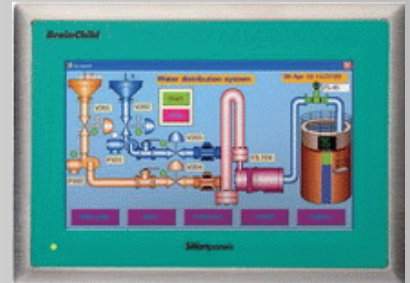


Intelligent Touch Screens for all industries

Domotic – Boatmatic – Plastic molding - Metal – Semiconductor – Food & Beverage - Pharmaceutical – Laboratory



Hardware features

- Five models in four sizes 4.3", 7", 10" & 15" with high resolution, led technology and a wide view angle which makes this HMI's suitable for visually oriented applications
- The low-cost HMI 730 and four models with SD slot, sound and many other options
- Standard Ethernet, USB host and 2 Serial ports met Modbus ASCII/RTU support
- Optional interne PROFIDUS, PROFINET, DeviceNet, Ethernet/IP CANopen, EtherCAT, CC-Link, ControlNet or CompoNet port
- Free easy-to-use programmable software or if OEM Windows CE 6.0 R2/3
- OPC server to support many PLC's and PAC's
- IP65 front (aluminium/ plastic) or available in stainless steel (IP66K) for food, beverage and pharmaceutical industry
- Large memory of 128 MB Flash and SDRAM memory to start quickly your applications
- USB host port used for keyboard, USB stick and mouse
- Suitable for horizontal or vertical installation and display
- 11-36 VDC or 90-250 VAC with low power consumption and heat development (no fan)

W.i.T.D. services

Postbus 236
1780 AE Den Helder, Nederland
KvK; 37120693
Tel. +31 (0)223 707424
E-mail: witd@waalamo.com
Website :<http://witd.waalamo.com>



WITD services

YOURTECH@WAALAMO.COM

"Measuring is knowing"

Also for your IO modules, temperature controllers, paperless recorders, wireless communication and engineering advice

Human Machine Interfaces *Smart Panels*

Operator Interfaces

Model	HMI 450	HMI 730	HMI 750	HMI 1050	HMI 1550
Display					
Size	4.3"	7"	7"	10"	15"
Resolution (WxH in pixels)	480x272	800x480	800x480	1024x768	1024x768
Display type	TFT wide touch screen	TFT wide touch screen	TFT wide touch screen	TFT wide touch screen	TFT wide touch screen
Colors	65,536	65,536	65,536	65,536	65,536
Touch screen type	Resistive analog	Resistive analog	Resistive analog	Resistive analog	Resistive analog
Active display area (WxH mm)	95 x 54	152 x 91	152 x 91	203 x 152	304 x 228
Display position	Both horizontal & vertical	Both horizontal & vertical	Both horizontal & vertical	Both horizontal & vertical	Both horizontal & vertical
MTBF backlight at 25°C	30,000 hrs	50,000 hrs	50,000 hrs	50,000 hrs	50,000 hrs
Backlight	LED	LED	LED	LED	LED
Brightness Adjustment	Yes	Yes	Yes	Yes	Yes
Screen saver	Yes	Yes	Yes	Yes	Yes
Language fonts	Unicode	Unicode	Unicode	Unicode	Unicode
Main hardware					
Processor, CPU speed	ARM 11, 533Mhz	ARM 11, 533Mhz	ARM Cortex-A8, 667Mhz	ARM Cortex-A8, 667Mhz	ARM Cortex-A8, 667Mhz
Flash memory (ROM)	128MB	128MB	128MB	128MB	128MB
SDRAM (RAM)	128MB	128MB	256MB	256MB	256MB
Operation System	WinCE6.0®	WinCE6.0®	WinCE6.0®	WinCE6.0®	WinCE6.0®
Real Time Clock	Yes	Yes	Yes	Yes	Yes
Buzzer	Yes	Yes	Yes	Yes	Yes
Sound Output	N.A.	N.A.	Option	Option	Option
SD card slot	Yes	N.A.	Yes	Yes	Yes
Interfaces					
RS232C, D89 Male	1	1	1	1	1
RS232C/RS422/RS485,DB25, Female	1	1	1	1	1
Ethernet 10/100 Mbps, RJ45	1	1	1	2	2
USB Host	1	1	1	1	1
Other Networks					
PROFIDUS DP, PROFINET(1/ 2 ports)	Option	N.A.	Option	Option	Option
DeviceNet, EtherNet/IP	Option	N.A.	Option	Option	Option
CANopen, eTHERcat	Option	N.A.	Option	Option	Option
CC-Link, ControlNet, CompoNet	Option	N.A.	Option	Option	Option
General Specifications					
Power Supply	11-36VDC	11-36vdc,90-250vac	11-36vdc,90-250vac	11-36vdc,90-250vac	11-36vdc,90-250vac
Consumption (w/o sound output)	5W	8W	9W	12W	25W
Power on LED indicator	Yes	Yes	Yes	Yes	Yes
Outer dimensions (WxHxD mm)	140x116x57	212x156x57	212x156x57	325x263x56	400x310x56
Mounting depth (mm)	51	51	51	50	50
Panel cutout (WxH mm)	123+ ¹ x 99+ ¹	197+ ¹ x 141+ ¹	197+ ¹ x 141+ ¹	310+ ¹ x 248+ ¹	367+ ¹ x 289+ ¹
Front bezel,housing	plastic, plastic	plastic, plastic	Aluminium, plastic	Aluminium, metal	Aluminium, metal
Stainless Steel front bezel (option)	N.A.	N.A.	Option, IP66K	Option, IP66K	Option, IP66K
Installation	Panel Mount	Panel Mount	Panel Mount	Panel Mount	Panel Mount
Net Weight (kgs)	0.5	1.3	1.5	4.4	5.8
Operating temperature 0°C to 50°C					
Storage temperature minus 20°C to 60°C					
Altitud 2000 meters					
Safety standards CE, UL, CSA					
Vibration resistance 9 to 150 Hz, 9.8m/s ² ,X,Y&Z directions 10 times (100 min.)					
Operating shock resistance 15g at 11 msec.					




WITD services
 YOURTECH@WAALAMO.COM
 "Green begins when measuring"